



Until we are all equal



Girls Education & Empowerment Fund

Acknowledgement of Country

Plan International Australia acknowledge and pay our respects to Aboriginal and Torres Strait Islanders Elders past and present of this nation. We recognise sovereignty was never ceded and that this land always was and always will be First Nations land. We recognise their ongoing connection to land, waters and community, and we commit to ongoing learning, deep and active listening, and taking action in solidarity.

Education is the key that unlocks a more equal world – one where girls have the power to shape their own futures and lift entire communities with them.

Yet over **122 million girls** are being denied this opportunity for reasons that are entirely preventable. Climate-fueled disasters, escalating conflict, and a devastating global hunger crisis are shutting the classroom door to millions more. Deep cuts to international aid and a global rollback of girls' rights threaten to erase decades of hard-won progress.

We refuse to let that happen.

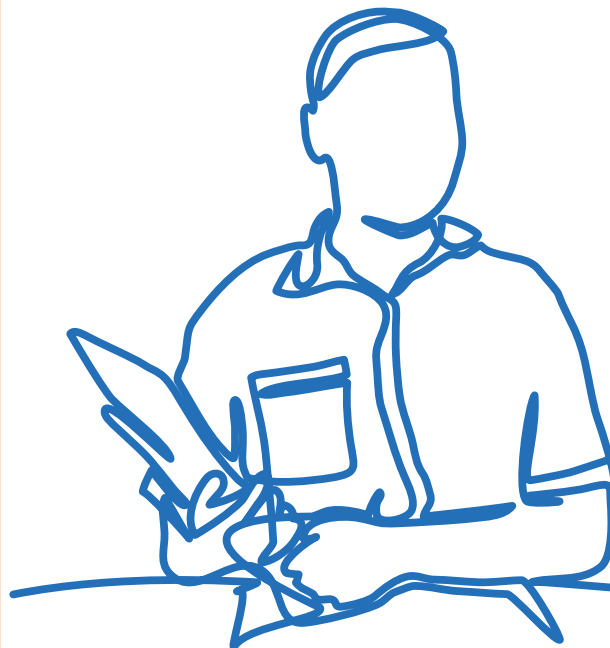
The **Girls Education & Empowerment Fund** (GEEFund) harnesses the power of collective philanthropy to break down every barrier in a girl's path. Together, we can ensure the next generation of girls can learn, lead, and thrive – transforming not just their own futures, but the future of our world.

Because a better now for her means a better future for everyone.



One child, one teacher, one pen, and one book can change the world

- Malala Yousafzai





The Power of Investing in Girls

When you invest in a girl's education, you change the course of her life – and the generations that follow.

Education is one of the most powerful tools for breaking the cycle of poverty and unlocking equality. But right now, the path to the classroom is blocked by global crises – and many are intensifying.

More than **122 million girls** are already out of school worldwide. In addition to the many barriers girls face each day, some of the most urgent global trends threatening their progress and rights include:

- **Escalating conflict and displacement**, exposing girls to heightened risks of violence, child marriage, and exploitation.
- The **world's worst hunger crisis in a generation**, with girls often eating last and least, yet being the first to leave school.
- **Climate-driven disasters** disrupting education and upending livelihoods.
- **Deep cuts to global aid**: in 2025 official development assistance (ODA) is projected to shrink by up to USD \$35 billion, compounding a USD \$21 billion last year – a total potential decline of USD \$56 billion from 2023 levels. Aid for vulnerable children and girls is at risk on a scale not seen in decades.
- **A rise in organised and well-funded anti-rights movements** around the world that are seeking to rollback hard-won rights for women and girls.

But the evidence is clear: investing in girls is one of the most transformative, high-impact actions we can take.


Investing in girls isn't just the right thing to do – it's the smartest way to uplift families, strengthen economies, and transform entire communities.

When girls are educated, empowered, and free to lead, the benefits ripple outward for generations.

- Universal secondary education for girls could virtually end child marriage, and reduce child mortality by 49%
- For every additional year of education that girls acquire, a country's resilience to climate disasters increases by up to 3%.
- If all girls completed their secondary education, countries would gain between \$15-\$30 trillion dollars in lifetime productivity and earnings.



Every \$1 invested into girls' education yields \$2.80 in economic returns



The stakes have never been higher. Without urgent action and investment, millions more girls could lose their right to an education – potentially for a lifetime. Their dreams, and the progress for entire communities, hangs in the balance.

But together, we can rewrite this story.

The Girls Education & Empowerment Fund is a movement of determined philanthropists, stepping up where international aid funding falls short, pooling their investments to break barriers and unlock opportunity for girls and their communities everywhere.

Now is the time to act. This is not a short-term fix. Join us in creating generational change. Because when girls rise, we all rise.

“When girls thrive, we all thrive. Investing in girls is investing in our common future.

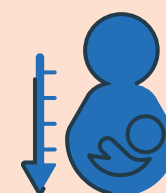
- António Guterres,
Secretary-General of
the United Nations

How GEEFund Breaks Down Barriers for Girls

Every girl deserves the chance to go to school and reach her full potential. At Plan International Australia, we know that achieving this isn't just about getting girls into a classroom – it's about breaking down every barrier that holds them back.

That's why the Girls Education & Empowerment Fund supports a comprehensive, evidence-based approach: addressing the root causes and intersecting challenges girls face from the earliest years of life through adolescence and into young adulthood.

The Six Barriers We Tackle – So Girls Can Thrive



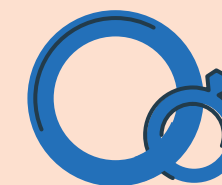
Stunting & Poor Childhood Development

A girl's future begins before she ever enters a classroom. Poor nutrition, limited access to early learning, and inequality in her earliest years set back her health, growth, and learning potential for life.



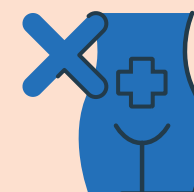
Poor Access to Water, Sanitation & Hygiene (WASH)

Without safe toilets, menstrual products, and clean water at school, girls often miss school when they have their periods or are made responsible for fetching water – leaving them vulnerable and out of class.



Gender-Based Violence & Child Marriage

Whether at home, in transit, or in school, girls face the constant threat of violence, harassment, and child marriage – shattering their sense of safety and often ending their education forever.



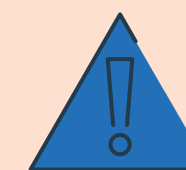
Lack of Sexual & Reproductive Health Support

Denied access to information and services, girls face early pregnancy, social isolation, and health risks – all of which put education and opportunity beyond reach.



Economic Hardship & Livelihoods

Poverty forces families to prioritise boys' schooling, pulls girls into domestic labour, and places the cost of education out of reach. That's why girls are often the first to leave school in hard times, limiting their futures for life.



Crises & Emergencies

Climate disasters, hunger, and conflict hit girls hardest – disrupting education, escalating violence and exploitation, and increasing the risk girls will never return to school.

Our approach, grounded in decades of experience and research, is built by working with and listening to girls and young women themselves – removing barriers, amplifying their voices, and helping communities create safe spaces where girls can learn, lead, and thrive.

Impact in Action



Real Change in Timor Leste

In rural Timor Leste, communities like Teresa's once struggled against dry soil, deforestation, and few opportunities to earn a stable income. With support from the Girls Education & Empowerment Fund, that is changing.

Through business training, modern farming skills, and new community savings groups, Teresa and her peers are boosting their harvests, protecting vital water sources, and building strong local businesses. Today, their surplus crops are sold at market, families save for the future, and girls – once sidelined – are at the heart of lasting change in their villages.

Project Achievements

- 4,694 project participants
- 12,650m2 of land used for regenerative farming
- 19 ponds and 17 small dams built in six villages
- 10 new Village Savings & Loans Associations supporting women's business and education ambitions



"The community is very happy. Now we can guarantee sustainable water for our daily needs during the dry season. We plant vegetables and other crops... Now our garden is always green."

- Teresa, 15

Growing Knowledge & Opportunity in Cambodia

In rural Cambodia, many children start school already behind – malnourished, with little early learning, and at risk of dropping out before reaching secondary school. Overcrowded classrooms and rigid gender roles made quality learning a distant dream for many young students, especially girls.

With support from the Girls Education & Empowerment Fund, 45 schools in Siem Reap established School Learning Gardens – turning lessons in science and mathematics into hands-on experiences and connecting learning directly to nutritious meals and gender equality.

Project Achievements

- 5,352 project participants
- 45 schools set up School Learning Gardens
- 48,704 students from 269 schools received school meals
- 93% of students are more interested in learning and enjoy school more



"I learned theory in the classroom and... practice skill in the garden and kitchen. It's easier to understand lessons because I can see and do... things in the garden and kitchen."

- Sakana, 12



Scan to see the project in action and hear directly from Teresa and her community



Scan to see Reoum, a primary school teacher, using the School Learning Gardens to challenge gender stereotypes.



Defending Girls' Rights and Dignity in Somalia

Mention of abuse and FGM/C

In Somalia, crisis and conflict have left communities struggling with hunger, displacement, and some of the highest rates of female genital mutilation and cutting (FGM/C) and child marriage in the world. Girls like Hani*, 17, have faced not only the violence and pain of FGM/C, but also the risk of seeing harmful practices repeated for a new generation. After attending Plan workshops and learning about the harms of FGM/C, Hani* convinced her mother to spare her sisters from the practice.

With support from the Girls Education & Empowerment Fund, workshops, safe spaces, and advocacy have helped thousands of girls and boys learn about their rights, build confidence, and find support – including legal help, counselling, and community education. Through advocacy and awareness, new laws have been passed to better protect children from exploitation and extreme practices.

Project Achievements

- 6,558 project participants
- 4,020 people learned about the risks of child exploitation and FGM
- 492 at-risk children helped through child protection interventions
- 12 new social workers trained



First, she refused to listen, but then she accepted it. My sisters didn't have to undergo FGM/C

- Hani, 17



Scan to hear Hani* tell her story



NAFIS NETWORK
Network Against FGC in Somaliland



Collective Action, Extraordinary Results

In just four years, our community of dedicated GEEFund supporters has achieved incredible things.

- **Nearly 1 million people reached** – 900,530 lives across 14 countries improved through GEEFund-supported projects
- **Over \$3.4m pledged** by our committed supporters
- **More than \$26 million in institutional funding unlocked** for sustainable, life-changing programs
- **Every \$1 pledged** by GEEFund supporters unlocks on average \$9 in impact.

In 2024, each \$1 given unlocked \$14 of impact – our highest leverage yet.

Discover More Impact



Scan the QR code to view all GEEFund Impact Reports and read further stories of change from around the world.



World Food Programme



Your Gift, Multiplied: The Power of Leverage

When you give through the Girls Education & Empowerment Fund, your generosity becomes a catalyst for change on a global scale. Here's how your support opens doors and multiplies opportunities for girls everywhere:

How GEEFund Works – Step by Step

Your commitment opens the door

You pledge a significant amount each year for five years, joining a growing community of dedicated philanthropists who believe every girl deserves the chance to learn and thrive.

When combined with our community, your pledge helps create a strong foundation that allows us – and you – to plan for ambitious, long-term projects.

Pooled Giving, Greater Power

We combine your gift with those of other GEEFund supporters, building the momentum we need to take on big challenges.

This collective support gives us the confidence and credibility to apply for, and deliver, large-scale projects for girls and their communities.

The more investment from our GEEFund community, the more we can maximise our multimillion dollar grant opportunities – driving long-term and sustainable solutions for girls.

Unlocking Multimillion Dollar Grants

Leading institutional funders such as UNICEF, the World Food Programme, and DFAT are prepared to back us with multimillion dollar grants. To access this funding, we must show at least 10-20% support from our own community.

This is where GEEFund is game-changing. Your donation becomes the crucial match that unlocks these grants and multiplies your impact, turning every dollar you give into far more for girls' futures.

With your support, doors to transformational funding open wide. Without it, these vital resources – and the life-changing programs they make possible – remain out of reach. Together, we can deliver the scale of change girls and their communities urgently deserve.



Multipling Your Investment

For every dollar you give, we are guaranteed to unlock at least \$2 or more in institutional funding.

From the first five years in pledges, every \$1 from GEEFund supporters has unlocked between \$7-\$14 from our institutional partners, expanding outreach and amplifying impact across education, health, economic empowerment and crisis response programs.

As a result, your five-year pledge delivers broad, deep, and long-lasting impacting – reaching more girls and transforming entire communities.



Power of Leverage



Why Multi-Year Giving Matters

Major grant-funded projects often run for three to five years, not just one. Your ongoing commitment over five years ensures girls get the sustained support they need, and that our programs can adapt and grow as the challenges girls face evolve.

What to Expect

Minimum commitment: \$5,000/year for 5 years (many choose to give more)

Your dollars are pooled, leveraged, and put straight to work – no waiting, no endowment, no delay.

Your investment will go directly to supporting transformative programs around the world designed to break down the barriers preventing girls from reaching their full potential.

You'll have a clear line of sight on the impact you're making, through exclusive Impact Reports, events, and opportunities to engage with Plan International leadership and program experts.

What This Means for You

You become a true partner in driving large-scale change. With every pledge, you make programs possible that would otherwise remain out of reach – and help unlock a better, more equal world for all.



For Visionary Philanthropists

If you have the capacity to make a six-figure investment, we encourage you to get in touch with us directly. As a leading GEEFund member, your significant gift will set the pace for others and help transform opportunities for girls on a global scale.



Join the Movement+

Join a growing community of passionate supporters and visionary girls around the world who are leading the way to a more equal future.

Your multi-year pledge isn't just a gift – it is an investment in a generation of girls who are ready to seize opportunities, break down barriers, and shape their own futures. Sustained support like yours means girls not only gain access to education, but can grow as leaders, entrepreneurs, and advocates year after year – building a legacy of equality and opportunity for all.

By working side-by-side with young women and communities, together we accelerate progress that endures. This is how transformative change can happen: when individuals like you unite with others, multiplying your generosity and impact, and join empowered girls and communities to create a world where possibility is within every girl's reach – not just for now, but for generations.

Make a Pledge

Ready to pledge? Scan the QR code and fill out your pledge form or contact us directly at ano.philanthropy@plan.org.au. A member of our team will then be in touch. Thank you for standing with girls to make transformative change.

If you want to learn more about GEEFund first, or have any questions for our team, you can visit our website at planau.me/geefund or email us at ano.philanthropy@plan.org.au.





Until we are all equal

plan.org.au 13 75 26

Plan International Australia
15/150 Lonsdale Street, Melbourne VIC 3000
GPO Box 2818, Melbourne VIC 3001
Tel: 13 75 26 Fax: +61 (3) 9670 1130
Email: info@plan.org.au

ABN 49 004 875 807

 /planaustralia

 @PlanAustralia

 @plan_australia

